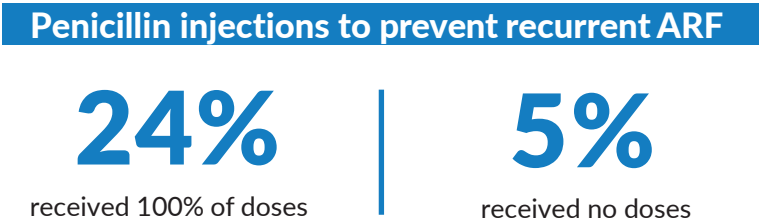
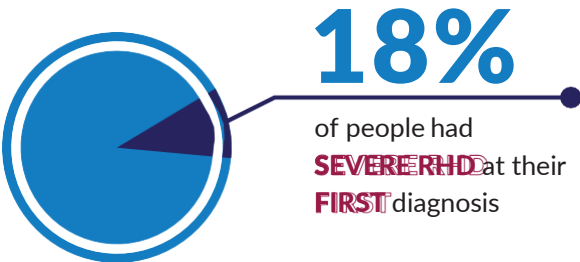
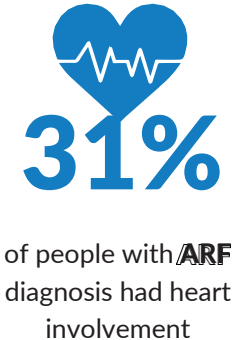
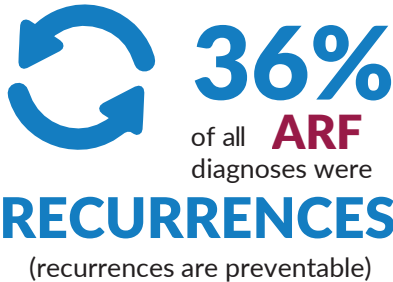
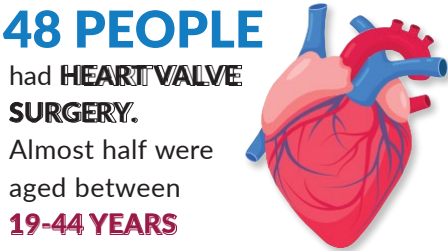
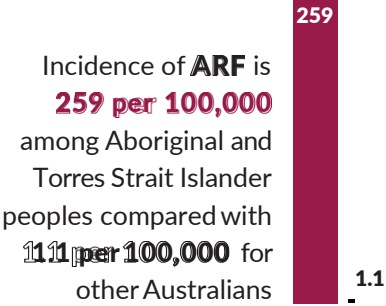
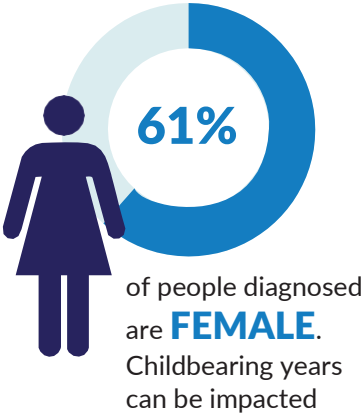
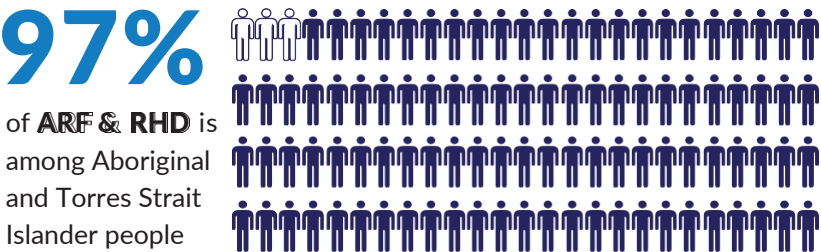


Acute Rheumatic Fever and Rheumatic Heart Disease in the NT

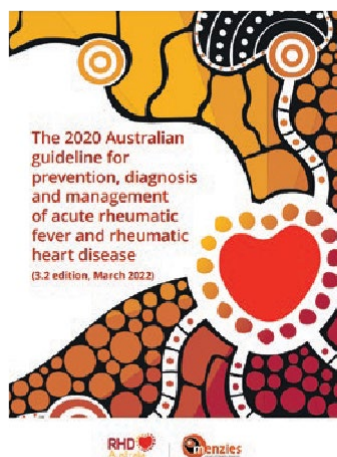
2024 Fast facts for health professionals



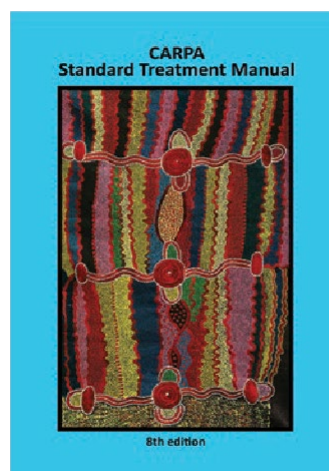
SOURCE: NT RHD Register 2024 Data

The NT RHD Control Program acknowledge that these numbers represent people living with ARF and RHD, and that this disease impacts on individuals, families and communities.

Information for health professionals



- National Australian Guidelines for ARF & RHD
- Accredited ELearning modules for health professionals
- Resource Library



- CARPA Standard Treatment Manual – 8th Ed
Pages 342-347



NACCHO
National Aboriginal Community
Controlled Health Organisation



- Resources and education for health professionals & community



NT HEALTH



- Information for health professionals and the public
- How to access the NT RHD Register

ARF and RHD are both notifiable diseases – to notify contact the RHD Control Program

Location

Email

Phone

Top End

RHDtopend.health@nt.gov.au

08 8922 8454

Central Australia

RHDcentral.health@nt.gov.au

08 8951 6909

For more information, visit

health.nt.gov.au/public-health-notifiable-diseases/acute-rheumatic-fever
rhdaustralia.org.au/

